

WOW



## Curiosity Club welcome pack

Are you ready  
for your annual  
membership  
adventure?



# Contents

Welcome to the Curiosity Club	3
Your membership benefits	4
Your support makes a big difference	4
Weekends and school holidays	5
Accessibility	6
STEM ideas for your family	7
Curiosity Club kids spot	8

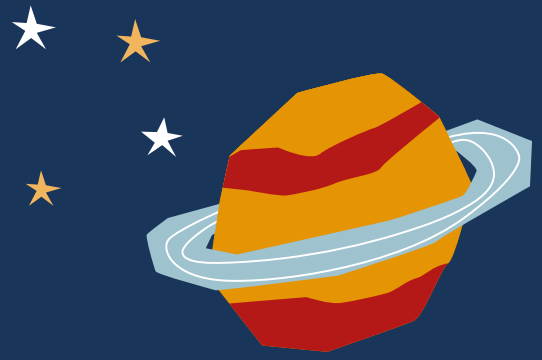
## Our membership cards have gone green

We're on a mission to make Winchester Science Centre more sustainable.

It's going to be a long, but exciting journey. One of our first steps on this rewarding adventure is to replace our plastic membership cards with paper ones.

Our new Curiosity Club cards are plastic free. They are made from paperboard which comes from sustainable and renewable sources. Your card is 100% recyclable so when you're finished with it just pop it in with your recycling waste. It has been responsibly manufactured at one of the world's most environmentally friendly paper mills. Thirty-two million trees are planted each year by the mill, three for every one harvested. Wow!





# Welcome to the Curiosity Club!

**Are you ready for 12 months of explosive fun?  
We've got an action-packed year ahead for you.**

Have you had a Wonder-full Wednesday afternoon yet? Each six-week school term, Curiosity Club members can join in with workshops, experience new Planetarium adventures, be wowed by the science show, watch huge demos and explore the interactive exhibits. All as part of your membership! Turn to page three to find out more.

Our live science shows are always a highlight for our members. We've got six different themed shows taking place throughout the year. Each one is filled with exciting demos and awe-inspiring experiments. You can reserve your ticket around two months before the first show. Make sure you reserve your spot before they're all gone! Page four has got everything you need to know about what there is to do at the Science Centre.

There's lots going on in the Planetarium this year too. Choose a live show, narrated by our Inspirers, and you'll be whisked around the Solar System to uncover its secrets. You can also experience a subtitled film show with fun animated characters. These are great for the smallest astronauts in training. Each school holiday there are new shows to watch. And Curiosity Club members get 10% off tickets – wow! Check out page two for all the benefits you get by being a Curiosity Club member.

And there's so much more to keep coming back for. Huge new demos in Science Live. Seasonal nature activities in Bio:Space. Outdoor fun in the adventure playground. And exciting immersive exhibits. We've even got lots to keep you entertained at home. Explore the learning hub on our website for at-home experiments, fun challenges and games the while family can join in with. Turn to pages five and six for more information.

**We're excited! We hope you are too.  
We can't wait to see you at the Science Centre very soon.**



# Your membership benefits

There's lots included as part of the Curiosity Club:

- Free admission to the Science Centre on weekends and school holidays for 12 months
- Free parking
- 10% discount on weekend and school holiday Planetarium shows
- 10% discount on purchases in the cafés
- 10% discount on purchases in the Science Shop
- Quarterly Curiosity Club e-newsletter
- Member preview events



## Your support makes a big difference

Did you know that Winchester Science Centre is an independent educational Charity?

We've been sparking children's curiosity in STEM since our Charity was founded in 1986.

We're on a mission to inspire and engage all children in STEM (science, technology, engineering and maths), no matter their age, ability or background. We do this by creating wow experiences that are fun, inclusive, interactive and accessible. Explosive live science – wow! Exciting hands-on activities – wow! Science in schools and the community – wow!

It's our hope that we can help create the STEM superstars of the future. By exciting every child's curiosity in STEM we want to help them develop the confidence, ambition and freedom to improve their lives, the lives of others and ultimately life on Earth.

Buying your membership supports our Charity on our mission. Together we can empower future generations to lead the charge for change, live healthier and more sustainable lives and to find the solutions to tackle the world's biggest challenges.

Thank you for your support.



# Weekends and school holidays

Are you ready for an action-packed family adventure?

Set off on an exciting journey through the world of STEM (science, technology, engineering and maths). Here's what you can explore on your next adventure:



[Click here >](#)

## The Planetarium

Come and fly through the stars in the Planetarium. Take a seat and zoom through the Solar System in an experience you'll never forget. Watch as animated characters bring exciting space adventures to life in a subtitled film show. Or join a live show and listen as our Inspirers tell amazing stories about the Solar System. Whatever show you experience, you'll learn some fantastic space facts.



[Click here >](#)

## Immersive exhibits

Does science sound like fun to you? It does to us! In our Sound, Hearing and Vibration zone you can climb inside a giant ear to see how it works. You can venture through an enormous playable guitar. You can even try learning some British Sign Language. On our lower floor, astronauts are needed for a mission through Explorer:Space. What does atmospheric pressure do when you blast off into space? Try your hand at coding a robot. And find out more about meteorites and stardust. Are you ready to blast off?



[Click here >](#)

## Bio:Space

Have you ever wanted to get up close to nature? You can in Bio:Space! Get stuck in with challenges and science activities inspired by the South Downs National Park. Let's find out more together about nature and how we can keep it safe and special for everyone to enjoy. And don't forget your hat and coat – we'll be going outside whether it's sunny or raining!



[Click here >](#)

## Science Theatre and Science Live

Science comes to life in the Science Theatre and Science Live. Join the audience in the theatre and become part of the experiments. You could be watching dancing fire or a super-cool dry ice cannon. You'll learn all about the science behind the wow. In Science Live, you'll be wowed by huge demos right on the exhibition floor. Here, our Inspirers will be doing all of the experiments that you definitely can't do at home!

# Accessibility

Science is for everyone.

So we've designed an experience that's accessible, fun and full of wow moments. We've created accessibility guides and social stories to help you plan your day.

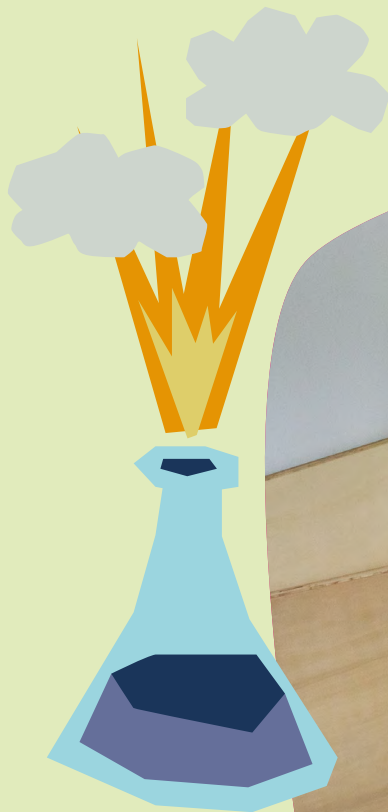
If you're a member with a disability and you need a carer, personal assistant or essential companion to help you with access during your visit, you can bring them free of charge when you reserve your ticket.

We have Blue Badge parking, wheelchairs that we can loan you and sensory backpacks with fiddle toys and ear defenders.

Our Changing Places facility is open 24 hours a day.

We also have a Recombobulation Room. It's a specially designed quiet space – a peaceful sanctuary away from the hustle and bustle of the Science Centre. If you need a quiet space, you'll love this calm, empty, space with hardly any sound and a lovely dimmable light.

If you have a health condition, impairment or would like to speak to the team about your accessibility needs, just get in touch – [access@winchestersciencecentre.org](mailto:access@winchestersciencecentre.org).



# STEM ideas for your family



[Click here >](#)

## Stargazing

Are your family keen to find out more about the night sky? Check out our monthly stargazing guides and videos. Here's a few top tips to help you out as well.

- Find the darkest spot you can, away from street and moon light.
- Your eyes take 20 minutes to get used to the dark. Be patient. The longer you wait, the more you'll see.
- You can see lots in the night sky with just your eyes. You don't always need a telescope or binoculars.
- Look slightly to one side to see faint objects. This is called Averted Vision.



[Click here >](#)

## Nature walks

We love being located in the South Downs National Park. It's full of nature and great places to explore. Did you know there's a footpath linking the Science Centre to Butterfly Conservation's flagship reserve, Magdalen Hill? If your family love getting out into nature and spotting wildlife, the South Downs National Park team have got some great tips for you on how to spot wildlife.



[Click here >](#)

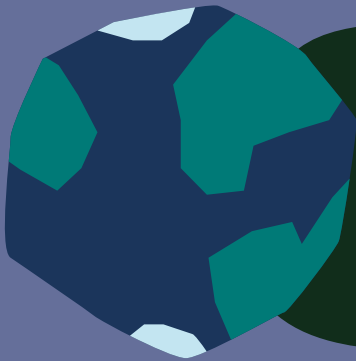
## CREST Awards

Have you got a science-mad child? Have you heard of the CREST Awards? The CREST Awards are organised by the British Science Association. They give children the chance to get involved with hands-on STEM projects. The awards are recognised by UCAS and with six levels children can progress from five years old to 16 and beyond.

# Curiosity Club Kids Spot

This section is just for the important people – kids!

Start your STEM (science, technology, engineering and maths) adventure at home with these fun activities.

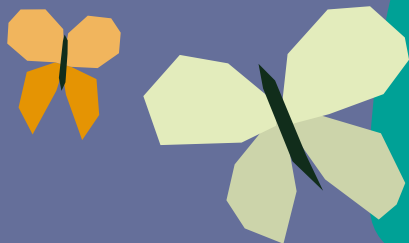


## Build your own model planet

We all know the Earth is round, right? Wrong!

The Earth is actually an oblate spheroid – a sphere that is squashed at its poles and wider at the equator. Planets are shaped this way because they spin. Let's find out why with this fun hands-on activity. We're going to build a model planet.

Turn to page 9 to find out more.



## Do butterflies taste with their feet?

Let's find out. Watch as our 60 second scientist digs into the facts. Wow!

Can you be a 60 second scientist? Make a habitats spinner and see how many facts you can come up with in 60 seconds.



## Can you make a mini green space in your home?

Let's try it! Green spaces, like parks and forests, help our environment and are important for our health and wellbeing.

In this fun experiment, follow our Inspirer's instructions to create four mini green spaces. Decide on four locations to keep them. Then see what happens to your seeds.



## What are other kids doing?

Have you ever invented something really exciting?

Well the people at Kids Invent Stuff take amazing ideas from children and make them into real things. We love this. We'd love to know if any of your inventions have ever been made.

[Click here to watch some of their videos >](#)



## Build your own model planet

1. Print out page 10 onto card. Cut out the three discs. The bigger discs are A and B. The smaller one is C.
2. Cut the centre holes in discs A and C so they are a tight fit on the stick. You need to make sure they don't move. Cut a larger hole into B so that it can slide up and down the stick easily.
3. Cut out the strips of card. Glue one end of each strip around the edge of disc A then put it on the stick.
4. Next fix disc C halfway up the stick. Put disc B on the stick beneath disc C. Glue the ends of the strips around its edge so that it looks like the model planet pictured. Make sure that disc B can easily move up and down the stick.
5. Hold the stick with disc B at the bottom and spin it. Change how fast you spin the stick and see what happens. What do you notice?



### You will need:

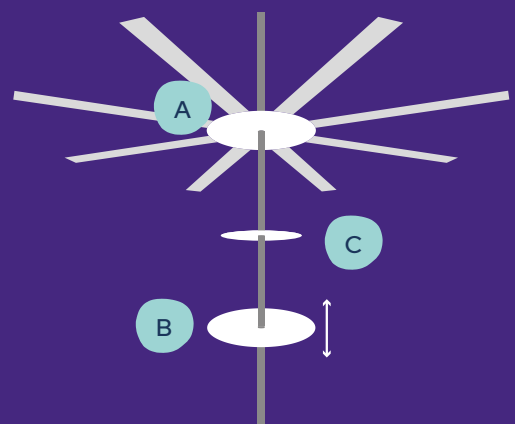
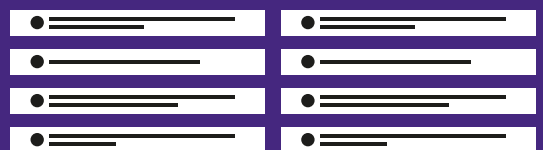
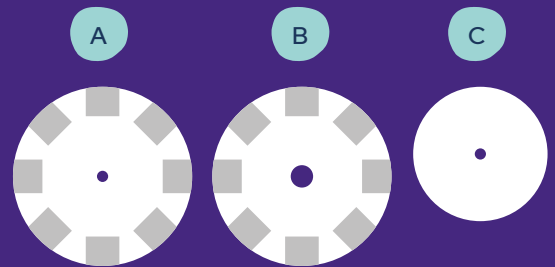
- A stick
- Some card
- Glue
- Scissors – make sure you get a grown up to help you with these

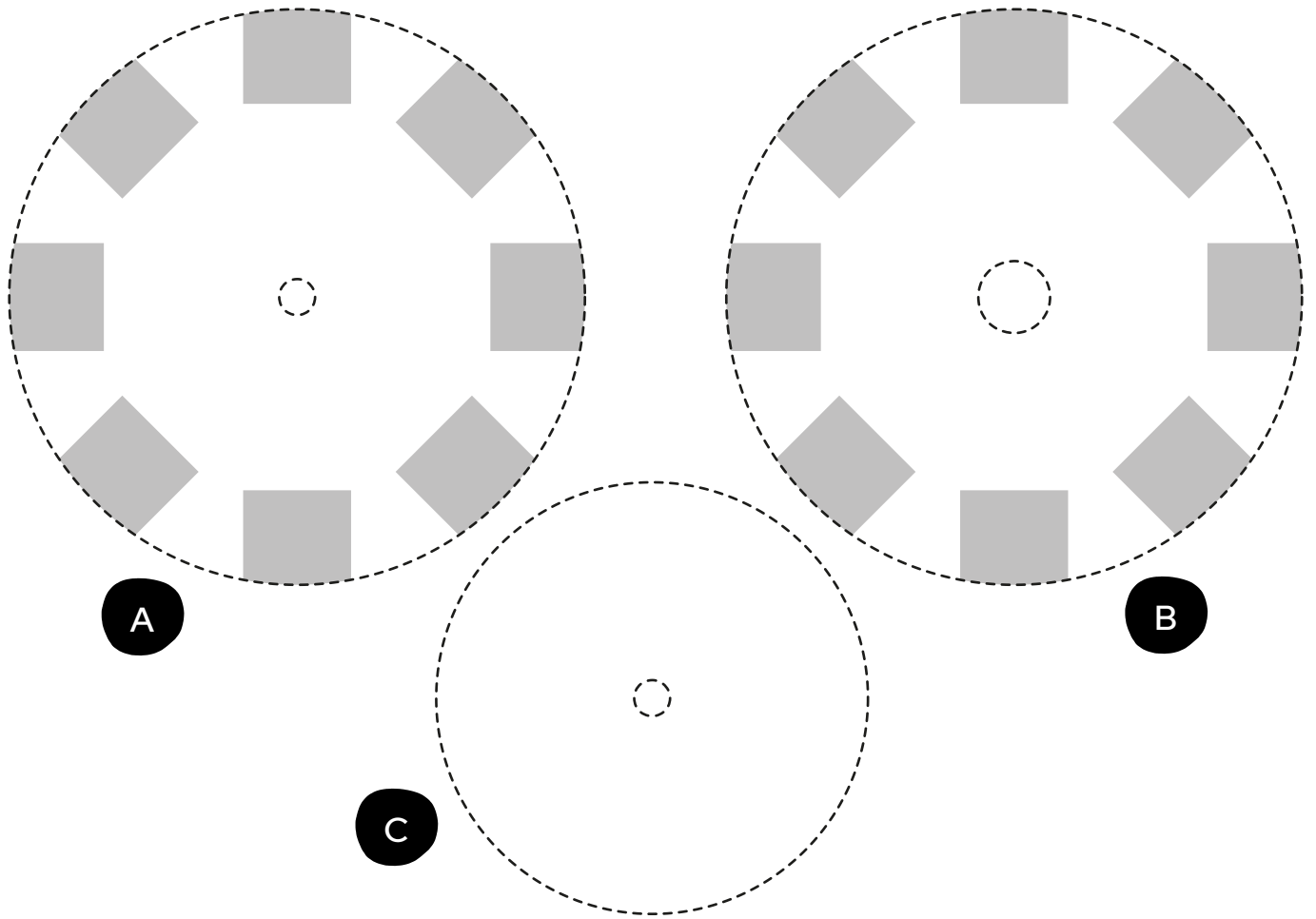
## The science behind the fun

Did you notice that the faster you spun your planet the further disc B moved up the stick and the more squashed the planet became?

Earth does not feel like it is spinning fast. It is spinning at about 1,600 kilometres per hour. That's faster than the world's fastest car!

Even at these incredible speeds the Earth is only 43 kilometres (km) wider at the equator than it is at the poles. This is a huge distance, but still quite small on the scale of the size of planet Earth. Earth is not the fastest spinning planet in our solar system, Jupiter has a surface rotational speed of over 70,000 km/h. With this huge speed the equator is over 9,000 km wider than the poles. This is the same as disk B on your model moving up by less than 2 centimetres (cm) on your planet spinner. Can you get yours to do that?





1

The Moon is the Earth's only natural satellite. A natural satellite is a space body that orbits a planet, a planet like object or an asteroid.

2

Ours is the fifth largest moon in the Solar System.

3

The average distance from the Moon to the Earth is 384403 kilometres (238857 miles).

4

The Moon orbits (goes around) the Earth every 27.3 days.

5

Mons Huygens is the tallest mountain on the Moon, it is 4700 metres tall, just over half the height of Mt Everest (8848m).

6

America's NASA Apollo 11 mission in 1969 was the first time a person landed on the moon.

7

The Earth's tides are largely caused by the gravitational pull of the Moon.

8

A lunar eclipse occurs when the Earth is between the Sun and the Moon.





Winchester Science Centre  
Telegraph Way  
Winchester  
Hampshire  
SO21 1HZ

[info@winchestersciencecentre.org](mailto:info@winchestersciencecentre.org)  
[www.winchestersciencecentre.org](http://www.winchestersciencecentre.org)

*Registered Charity No. 294582*